

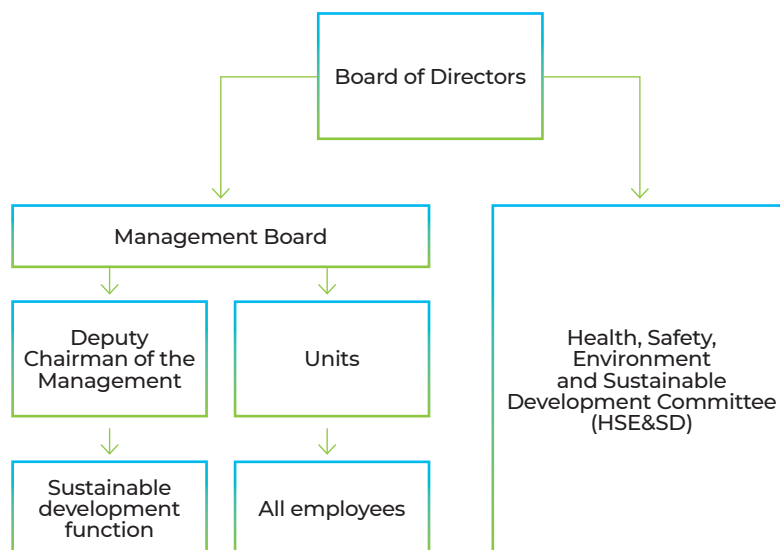
Comprehensive approach to ensuring KMG's sustainable development

The Board of Directors of KMG engages in strategic oversight and control over implementation of sustainable development principles. It also approves the Company's annual Sustainability Report.

The Health, Safety, Environment and Sustainable Development Committee (HSE&SD) of the Board of Directors considers and manages sustainability matters, develops recommendations on sustainability policy, annual Sustainability Report, action plans and other internal documents on sustainability that fall within the remit of the Board of Directors, implements ESG aspects of sustainable development, builds a governance system to oversee sustainability, defines sustainability goals and KPIs, monitors KMG's progress in the area of sustainability, and integrates sustainability into KMG's key processes.

The Management Board is responsible for proper execution and implementation of the Company's sustainability principles, policies, standards, and action plan. It also monitors KMG's sustainability activities and progress against goals and KPIs in this area.

Deputy Chairman of the Management Board who is responsible for sustainable development coordinates approaches to achieve goals and KPIs in sustainability initiatives and oversees the implementation of corporate sustainability standards and the preparation of sustainability reports.



The sustainable development unit of KMG's Strategy and Portfolio Management Department is responsible for initiating, coordinating and implementing the sustainable development management system, supporting its integration into the Company's business, providing methodology support in sustainability matters, annual preparation and approval of the Sustainability Report, assisting the Company's units as needed in identifying and managing sustainability risks and in developing a stakeholder map and ways of interaction, as well as trainings in sustainable development.

Units of KMG are responsible for implementing the sustainable development management system, identifying sustainability risks, developing a stakeholder map and ways of interaction, running sustainable development initiatives, and preparing information for the Sustainability Report as per international standards.

All employees of KMG, at their respective level, implement sustainability principles and activities by acting as role models and following respective policies and standards.